

Journal of Applied Remote Sensing

Vegetation mapping from high-resolution satellite images in the heterogeneous arid environments of Socotra Island (Yemen)

Luca Malatesta
Fabio Attorre
Alfredo Altobelli
Ahmed Adeeb
Michele De Sanctis
Nadim M. Taleb
Paul T. Scholte
Marcello Vitale

Vegetation mapping from high-resolution satellite images in the heterogeneous arid environments of Socotra Island (Yemen)

Luca Malatesta,^a Fabio Attorre,^b Alfredo Altobelli,^c Ahmed Adeeb,^d
Michele De Sanctis,^b Nadim M. Taleb,^d Paul T. Scholte,^e and
Marcello Vitale^b

^aUniversity of Camerino (MC), Department of Environmental Sciences, Section of Botany and Ecology, via Pontoni 5, I-62032, Camerino (MC), Italy

luca.malatesta@unicam.it

^bSapienza, University of Rome, Department of Environmental Biology, P.le Aldo Moro 5, Rome, I-00185, Italy

^cUniversity of Trieste, Department of Life Sciences, via Edoardo Weiss, 2, Trieste, I-34128, Italy

^dEnvironmental Protection Authority of Socotra, P.O. BOX 111, Hadibo, Socotra, Yemen

^eDeutsche Gesellschaft für Internationale Zusammenarbeit (GIZ) GmbH, B.P. 7814 Yaoundé, Cameroun

Abstract. Socotra Island (Yemen), a global biodiversity hotspot, is characterized by high geomorphological and biological diversity. In this study, we present a high-resolution vegetation map of the island based on combining vegetation analysis and classification with remote sensing. Two different image classification approaches were tested to assess the most accurate one in mapping the vegetation mosaic of Socotra. Spectral signatures of the vegetation classes were obtained through a Gaussian mixture distribution model, and a sequential maximum *a posteriori* (SMAP) classification was applied to account for the heterogeneity and the complex spatial pattern of the arid vegetation. This approach was compared to the traditional maximum likelihood (ML) classification. Satellite data were represented by a RapidEye image with 5 m pixel resolution and five spectral bands. Classified vegetation relevés were used to obtain the training and evaluation sets for the main plant communities. Postclassification sorting was performed to adjust the classification through various rule-based operations. Twenty-eight classes were mapped, and SMAP, with an accuracy of 87%, proved to be more effective than ML (accuracy: 66%). The resulting map will represent an important instrument for the elaboration of conservation strategies and the sustainable use of natural resources in the island. © The Authors. Published by SPIE under a Creative Commons Attribution 3.0 Unported License. Distribution or reproduction of this work in whole or in part requires full attribution of the original publication, including its DOI. [DOI: [10.1117/1.JRS.7.073527](https://doi.org/10.1117/1.JRS.7.073527)]

Keywords: vegetation map; supervised classification; sequential maximum *a posteriori*; Socotra Island; RapidEye image.

Paper 12330 received Nov. 9, 2012; revised manuscript received May 8, 2013; accepted for publication Jul. 1, 2013; published online Aug. 2, 2013.

1 Introduction

Vegetation mapping is an important tool for natural resources management and land use planning, since vegetation acts as a base for all living organisms and plays an essential role in global dynamics.^{1,2} In addition, vegetation mapping provides valuable information for investigating natural and semi-natural environments through the quantification of vegetation cover from local to global scales at a given time point or over a continuous period. Mapping current states of vegetation cover is a crucial step toward the implementation of environmental conservation and restoration programs.³

Several studies have proven that traditional methods (e.g., field surveys, literature reviews, map interpretation, and ancillary data analysis) are not effective to map vegetation cover, since they are time-consuming, date-lagged, and often too expensive.^{4–6} Conversely, remote sensing (RS) represents a practical and economical instrument to study vegetation cover^{4,7} and has been applied to map vegetation cover from local to global scales over the last three decades.⁶ RS has been widely applied in vegetation and land cover mapping of arid environments, especially when combined with thorough ground-truthing.^{8–10}

However, arid environments are challenging due to the heterogeneous vegetation cover, which complicates the identification and mapping of vegetation types,¹¹ especially when accompanied with variable geomorphological features.^{6,12} In these contexts, moderate- and coarse-resolution satellite images have shown several limits and disadvantages. First of all, the limited detail makes it impossible to map complex vegetation patterns, leading to high levels of error in the case of mosaicked vegetation.^{13,14} In addition, coarse resolution (and reduced number of spectral bands as well) is not suited to mapping applications when dealing with vegetation communities characterized by heterogeneous covers that cause irregular spectral response not only in different environmental contexts but also over small areas.^{6,11,15} In these cases, traditional classification approaches like maximum likelihood (ML) and single-class signatures proved to be equally ineffective given the impossibility to describe heterogeneous classes and the high level of map fragmentation and misclassifications obtained in the case of mosaicked environments.^{5,16,17} Therefore, ecologically meaningful vegetation maps need to be based on thorough vegetation surveys/analysis, hyperspatial/hyperspectral satellite data, and precise and flexible classification approaches in order to provide a reliable reference for monitoring, management, and planning.^{6,15,17,18} Král and Pavlis⁹ first attempted to produce a land cover map of Socotra Island (Yemen), a global biodiversity hotspot located in the Indian Ocean, through an ML classification of LANDSAT coarse-resolution images based on field verifications. Even though this is a valuable dataset that filled a key knowledge gap, more effort is needed toward the production of a high-detail vegetation map faithfully representing the valuable vegetation communities of the island.^{19,20}

In the present study, in order to produce an ecologically accurate vegetation map of Socotra, a high-resolution, multispectral satellite image was classified based on a sequential segmentation process particularly suited to complex vegetation mosaics.^{5,11,12} This classification was compared to the traditional ML approach by assessing the percentage of accuracy reached on the basis of a reference dataset obtained from a statistical analysis of more than 300 vegetation field surveys.

Socotra Island is included among global biodiversity hotspots owing to the high level of plant endemism, placing it among the most important islands in the world.¹⁹

For this reason, the island has earned many international awards: Man and the Biosphere Reserve (UNESCO), World Heritage site (UNESCO and World Heritage Organization), and Special Protected Area (Government of the Yemen Republic). In particular, the archipelago hosts 837 plant and fern species, with 308 (37%) endemics. At higher taxonomic levels, the endemics include 15 genera and 1 subfamily.^{19,20,21}

In the last decade, several international projects dedicated to nature conservation and sustainable development of the island have been started under the patronage of the International Union for Conservation of Nature, UNESCO, or other international nongovernmental organizations and donors to protect the natural resources of the island from the increasing threats of pollution, overgrazing, and spread of invasive species.^{19,20} In this perspective, an ecologically accurate vegetation map will represent a key resource for conservation, monitoring, land use planning and management, as well as a primary instrument for future research on the natural resources of Socotra.

2 Study Area

Socotra Island, covering 3650 km², names an archipelago also including three smaller islands and a series of rocky outcrops (Fig. 1). Socotra archipelago is part of Yemen and is located in the northwestern Indian Ocean (Long: 12°06'–12°42' N, Lat: 52°03'–54°32' E). Socotra was

connected to the Gondwana supercontinent until the Cretaceous era, after which an ocean loch separated it from Arabia, about 18 million years before present.²⁰ This long isolation triggered the development of the high level of endemism, placing the archipelago among global biodiversity hotspots.²¹

Three main environmental systems can be identified: the coastal plains, the calcareous plateaux, and the central granite Haggeher mountains.²¹ The coastal plains are widest in the south-west; elsewhere, they consist of narrow flat lands ending in rocky scarps toward the highlands. Water streams are characterized by a torrential hydrological regime, and soils are mainly alluvial. The calcareous plateaux occupies most of the eastern and western-central parts of the island, with altitudes ranging from 300 to 800 m. Soils are generally thin, and the vegetation cover appears notably scattered. The central granite Haggeher massif protrudes from the limestone sublayer in the eastern-central area of the island and maintains some of the most peculiar landscapes in Socotra: mountain slopes show continuous vegetation cover in a complex mosaic of clearings, grasslands, shrublands, and woodlands.

The climate of Socotra is characterized by the Indian Ocean monsoon. The average temperature is 27°C and the mean annual rainfall amounts to 216 mm, with a marked periodical trend influencing vegetation dynamics, mainly affected by the rotation of monsoon seasons. The mountainous chain is the main factor for climatic variability and causes increase in rainfall and frequent fog.²²

The first studies on the vegetation of the archipelago were made by Balfour.²³ Recently, a more exhaustive and detailed analysis of the vegetation of Socotra was realized by De Sanctis et al.,²⁴ who identified a clear altitudinal gradient for four distinctive vegetation zones, ranging from the arid coastal plains up to the subhumid upper zone of the Haggeher mountains.

The traditional economy that was based on pastoralism and fisheries allowed the small human population of the island to use natural resources without excessive exploitation. This equilibrium was favored by the isolation of the archipelago, which lasted until the 1990s, when many development projects, such as the building of an airport, a sea port, and a network of roads, took place.^{19,20} Habitat degradation and spreading of invasive species are considered the most dangerous current threats to the biodiversity of Socotra.²⁰ The fragmentation caused by the road network generates pressure on hitherto inaccessible ecosystems and is increasing the illegal collection and trade of its endemic species. Among the plant species, 88 exotics have been identified, among which 61% have been recognized as having the potential to become invasive and 10% are considered naturalized and widespread.²⁵ Another threat is the abandonment of traditional land use practices.²⁰ These dynamics represent an increasing threat to important habitats,

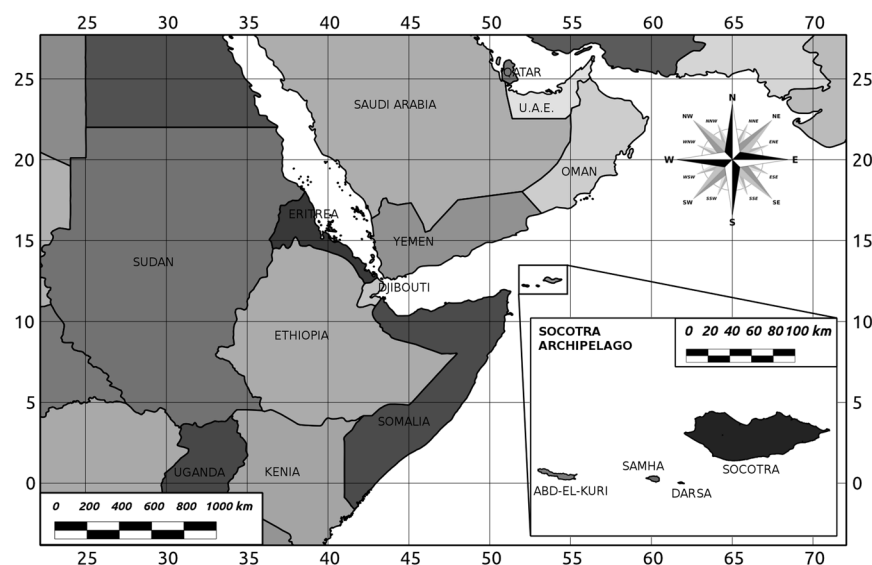


Fig. 1 Location of the study area. Socotra archipelago is part of the Republic of Yemen and comprises Socotra, the largest island, Abd-el-Kuhri, Samha, Darsa, and a series of rocky outcrops. It is located in the northwestern Indian Ocean.

which is believed to cause regeneration problems in threatened species such as *Dracaena cinnabari* and *Boswellia spp.*^{26,27} In this perspective, this study is also aimed at filling a knowledge and data gap, providing a high-resolution vegetation map that will represent a useful and reliable instrument for conservation and sustainable development projects.

3 Materials and Methods

3.1 Satellite Data

RS data were chosen to provide a high resolution and an adequate range of spectral bands: a RapidEye image set was acquired on December 27, 2010, and provided with the application of default radiometric, sensor, and geometric corrections.

RapidEye provides multispectral five-band images with a pixel resolution of 5 m, the possibility to acquire images daily for any area on Earth, and a temporal resolution of 5.5 days at nadir.^{28–30} The high spatiotemporal resolution allowed the selection of minimum cloud cover images within a relatively small time span, and the availability of five spectral bands (with a Red Edge band) allowed for a more accurate representation of plant communities.²⁸ As a matter of fact, the Red Edge band has been found to be correlated with chlorophyll content, and thus with photosynthetic activity, while being insensitive to soil background and atmospheric noise.^{28,31} In addition, it has been applied to the analysis of *N* status of crops and grasslands.^{28,32} These features explain how the availability of this wavelength can add more detail to the analysis of the spectral features of the vegetation classes, thus contributing to the production of a more accurate map.

3.2 Classified Vegetation Surveys

The vegetation categories were derived from De Sanctis et al.,²⁴ who conducted a phytosociological field survey between 2007 and 2009 with 318 vegetation relevés. Multivariate statistical analysis of vegetation relevés allowed the identification of eight types of woodland, seven of shrubland, six of herbaceous, and seven of halophytic vegetation. In this way, a training dataset for the classification procedure was obtained from georeferenced classified field surveys. Around each relevé, a 10 m buffer was created to generate training areas. This reduced dimension of the training areas was chosen to adapt to the mosaicked environment characterizing some areas of the island and to represent the mean surface covered by each relevé. The training map was then generated by converting the buffer areas obtained to raster. The original vegetation classes were modified during the image classification phase to take into account the overlapping spectral signatures, while some vegetation communities showing a large degree of spectral overlap were aggregated into single classes.

3.3 Image Classification

The classification of satellite images is a multistep procedure.⁶ The first phase consists of extracting the statistics of the spectral responses of the defined classes (spectral signatures). Subsequently, these data are used to assign every pixel of the map to a specific class. This operation is executed by means of statistical (and in some cases spatial) computation based on spectral signatures. Two alternative approaches were tested, each one based on a different methodology of signature extraction and image classification. The effectiveness of the two methods was compared by evaluating the respective total accuracy of the final maps they produced.

3.3.1 Spectral signatures

Spectral signatures represent a statistical description of the spectral response of the classes defined in the training map.⁶ Two different approaches were tested to obtain spectral signatures.

The first methodology consisted of the extraction of a single signature for each class identified by the training map. This operation can be executed in GRASS³³ through the model

i.gensig and is based on an analysis of the distribution (mean, variance, covariance matrices) of the reflectance values observed for the reference classes in each band of the satellite image. Despite its simplicity and quick execution, this methodology is strongly affected by the internal variability in coverage and composition of the vegetation classes that cannot be accurately represented by single-class signatures.^{16,17}

The Gaussian mixture distribution (GMD) model is a probabilistic approach that considers a variable number of subclasses, each described by a multivariate Gaussian distribution defined by a small number of parameters (mean and variance of each variable, covariances between each pair of variables, and a weighting based on the proportion of data described by the subclass). Each subclass is defined by a multivariate Gaussian distribution, and at the same time the combined mixture of distributions adapts to nonlinear patterns in the data; thus, the Gaussian mixture for each class does not resemble a Gaussian distribution.^{5,34}

We estimated the number of subclasses directly from the data, with the advantage of an objective determination of the tightness of fit that prevents over- and underfitting. These operations were executed in GRASS through the module *i.gensigset*. The effectiveness of GMD classes, which acts as a basis for a sequential maximum *a posteriori* (SMAP) classification, proves superior, especially in heterogeneous contexts where the same vegetation typology can be characterized by different coverage or composition, resulting in a nonlinear distribution of spectral response values.^{5,16} Nevertheless, a thorough selection of source data must be operated, because inaccurate training points can generate undesired subclasses and increase misclassifications.^{5,34} We paid particular attention to the field positioning of vegetation surveys to obtain homogeneous buffer areas. This, together with the reliable classification methodologies applied to obtain the reference classes, ensured the suitability of the data to the particular demands of the GMD approach.

3.3.2 Classification

Depending on the type of signatures extracted, two image classification methodologies were applied.

The ML method is based on a separate classification operated for each pixel of the satellite image, independently from the others. The assigned class shows the highest probability of coincidence (computed with a maximum-likelihood algorithm) with the observed spectral response, described by the single-class signatures defined by the *i.gensig* module. The GRASS module performing this operation is *i.maxlik*. This simple methodology showed several limitations when applied to complex vegetation patterns in previous studies.^{5,16,17,35} The separate assignment of single cells causes fragmentation of the classified map, especially in the case of high-landscape heterogeneity.^{17,35} Moreover, this procedure is based on single-class spectral signatures not capable of classifying heterogeneous vegetation classes.³⁵

The SMAP classification is a spatially explicit process based on a multiscale approach assigning pixels to a class in consideration of nearby cells.^{5,35} It is executed through the *i.smap* package and is based on multiclass GMD signatures extracted through the *i.gensigset* module. This procedure assumes that in the surroundings of vegetation type, the probability of observing the same formation is higher.^{5,36–38} The assignment is performed through the application of a series of masks increasing in dimension (pixel height and width), and thus at a progressively finer scale, each casually dependent on the previous one (Fig. 2) according to Markov's random field model.^{36–38} This GMD–SMAP methodology has been shown to be more effective than the ML classification, since it is capable of producing homogeneous maps, and is thus recommended for the interpretation of heterogeneous and mosaicked environments.^{5,16,17,38}

3.3.3 Mapped classes

The vegetation map obtained (Fig. 3) comprises 28 classes, including plant communities identified by De Sanctis et al.,²⁴ as well as several land cover types, briefly described below.

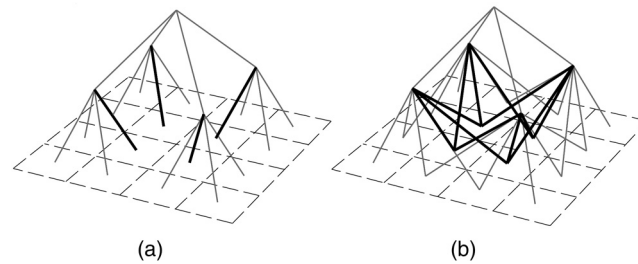


Fig. 2 Spatial structure of Markov's random field model, defining the relationships between cells at different resolutions for the application of the SMAP algorithm (adapted from Gavin and Hu, 2005—courtesy of D. G. Gavin). (a) Four-fold ramification used for high-resolution calibration. Dashed lines represent the raster grid at finer detail. Solid lines show the union scheme for the classification of coarser-scale pixels. (b) Pyramidal structure used for the segmentation process, starting from coarser resolutions. It can be seen how each of the four central points is connected to three nearby cells of the precedent level.

Forests.

Mangr: Mangroves. Dominated by *Avicenna marina* mainly along the southwestern coast.

Woodlands.

ComSt: *Commiphora ornifolia*-*Sterculia africana* woodland. This class includes woodlands of the slopes facing the sea and of the valleys in the lower mountain belt, where they are protected from the strong dry winds of the summer monsoon.

BoswE: *Boswellia elongata* woodland. This formation grows on the stony soils of limestone plateaux, at an altitude of 300 to 450 m. It is represented by an open formation with a herbaceous layer, owing to the high fertility of the karst substratum.

DracC: *Dracaena cinnabari* woodland. This type is located on limestone plateaux between 300 and 750 m, on thin stony soils.

BoswA: *Boswellia ameero* woodland. This vegetation type becomes dominant on granitic substrata starting from 600 m. It shows a close coverage and a dense shrub layer, and strikingly appears in February, due to the spectacular red blooms of *Boswellia ameero*.

LeuPi: *Leucas haggiriensis*-*Pittosporum viridiflorum* woodland. A closed formation with a mosaic of thick and clear patches, hosting a dense shrub layer located in the highest part of the Haggeher mountains (>1300 m) on granitic substrata.

Shrublands.

PulSt: *Pulicaria stephanocarpa* dwarf shrubland. Typical of coastal areas, considered a degraded form of *Croton socotranus*, caused by overgrazing and wood harvesting.

JusRi: *Justicia rigida* dwarf shrubland. This formation is mixed with **PulSt** in which *Justicia* is often present. De Sanctis *et al.*²⁴ combined it with the previous community for their floristic similarity. We considered it as an independent class because the dominance reached by the diagnostic species makes it clearly recognizable.

CrSoc: *Croton socotranus* shrubland. The dominant vegetation type on Socotra, especially in the dry alluvial areas; widespread from the coast up to 500 m on stony sedimentary soils.

JatAd: *Jatropha unicostata*-*Adenium obesum* shrubland. This vegetation type replaces **CrSoc** on the escarpments connecting the edge of the basal plain with the limestone highlands and is characterized by a higher percentage of bare rocks.

Buxan: *Buxanthus pedicellatus* shrubland. Typical of submountain areas on limestone slopes and valleys with bare rocks. At lower altitudes, it is widespread along wadis.

CrSar: *Croton sarcocarpus* shrubland. Widespread on the central limestone plateaux between 300 and 1000 m on rocky soils. In the absence of disturbance (grazing, timber harvesting), it would probably evolve toward **DracC**, showing a very similar floristic composition and ecological characteristics.

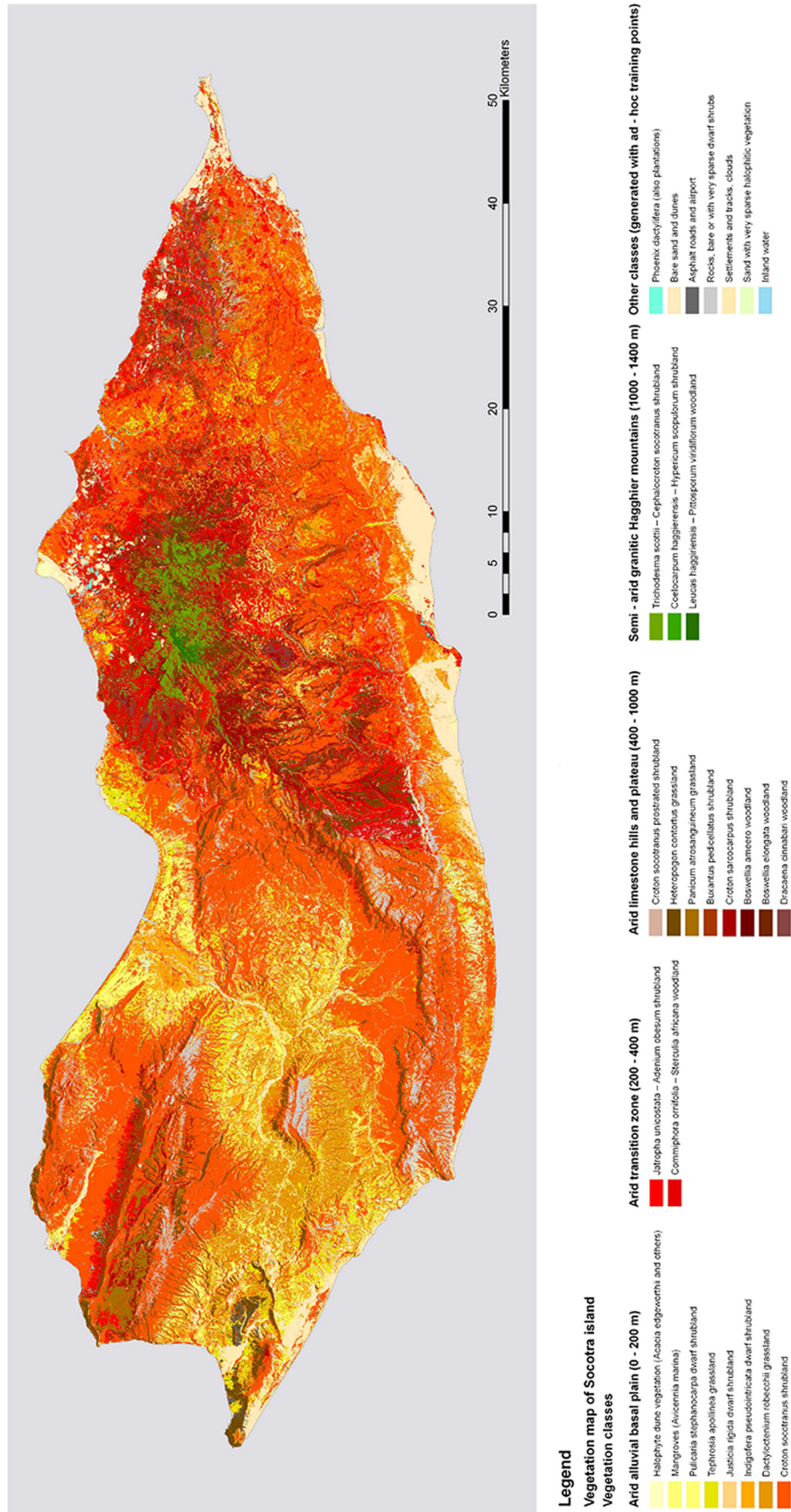


Fig. 3 Vegetation map of Socotra Island produced with SMAP classification. See Sec. 3.3.3 for a brief description of the mapped classes.

- Crprs:** *Croton socotranus* (prostrated) dwarf shrubland. This garrigue-like formation is dominated by prostrated shrubs of *Croton socotranus*, typical of unsheltered rocks on highlands subject to strong winds.
- TrCep:** *Trichodesma scottii*–*Cephalocroton socotranus* shrubland. This formation locates just below **CoeHy** on the Haggeher mountains.
- CoeHy:** *Coelocarpum haggierensis*–*Hypericum scopulorum* shrubland. This is the highest-located shrubland formation of Socotra, reaching an altitude of 1450 m, developed with a dense coverage on gentle slopes or small plateaux with deep soils.

Grasslands.

- TephA:** *Tephrosia apollinea* grassland. Very common on the coastal plains, where disturbances due to grazing are most evident. The diagnostic species is an unpalatable forb, indicating overgrazing and disturbance.
- IndPs:** *Indigofera pseudointricata* grassland. Sparse and scattered formation typical of arid environments with scarce vegetation cover.
- DacRo:** *Dactyloctenium robecchii* grassland. This particular type of rugged-stem tussock grass forms a patchy, scattered vegetation typical of the central-western plains.
- PanAt:** *Panicum atosanguineum* grassland. Located on the hilly and low mountain limestone areas between 400 and 600 m on deep and well-developed soils; this vegetation type represents one of the rich pastures of the island and is the nodal point of the transhumance system.
- HeCon:** *Heteropogon contortus* grassland. This type comprises the grasslands of the lower Haggeher mountains, located at an average altitude of 900 m, and the upper belt variant dominated by *Eragrostis papposa*, typical of the fertile red soils of the semi-arid summit zones.

Halophytic vegetation.

- halveg:** Halophytic vegetation. This class comprises all the dune vegetation and is dominated by dwarf shrubs species tolerant to high levels of salinity.
- sndvg:** Sand with sparse halophytic vegetation.

Other land cover types.

PhDac: *Phoenix dactylifera* plantations.

Rocks.

Dunes.

Water.

Settlements (also includes clouds).

Roads.

3.3.4 Postclassification

After the classification, the accuracy of the map was improved by applying filters based on the ecological characteristics of the vegetation typologies, to reduce the number of misclassified pixels when the corresponding classes could be distinguished on an ecological basis.^{6,9} These situations were identified by observing the confusion matrix (see Sec. 3.3.5). When two classes show a similar physiognomy and/or vegetation cover, their spectral signatures will be almost coincident, and the class with the larger standard deviation and decision boundaries will tend to classify more pixels, resulting in misclassification of cells belonging to other spectrally similar typologies. If a threshold value of any environmental parameter exactly separating the two classes exists, a raster map representing the selected parameter can be used to correct this error through the application of a postclassification filter.^{6,9} The operation consists of assigning the pixels of the first class, beyond the defined threshold, to the second. To execute this, the *r.mapcalc* module^{39,40} was used in the GRASS environment. The selected parameter was altitude, which determines the distribution of plant communities on the island.

According to this procedure, two main postclassification filters were applied in order to correct the high level of omission observed for the class **TrCep**. In the first case, the

postclassification process allowed the reassignment of pixels belonging to this formation and wrongly classified as **LeuPi**. These vegetation typologies are characterized by partially coincident spectral signatures having similar physiognomies, coverage and biomass production, and being located in the upper mountain belt. However, since **LeuPi** can be found only above 1300 m, cells assigned to this class and situated below 1300 m were reassigned to **TrCep**. In the second case, the application of another filter allowed us to correct the misclassification of pixels belonging to **TrCep**, wrongly assigned to **CoeHy**. The similarity in the spectral response of the two typologies was again due to their analogous characteristics, both showing dense coverage and generating thick and sometimes inaccessible formations in the high mountains. In spite of this, it is possible to identify a lower limit for **CoeHy** at an altitude of 1100 m. Therefore, the second postclassification filter reassigned to **TrCep** those **CoeHy** pixels below 1100 m.

3.3.5 Accuracy assessment

The accuracy of the classification was evaluated through comparison with a set of test areas selected from independent field observations conducted between February and December 2010. Each test area was obtained by converting the corresponding georeferenced relevé to raster with a 10 m buffer. The accuracy assessment consisted of overlaying the test set and the classified map to compare the classification of each map cell with its corresponding reference pixel, and computing the number of correct and incorrect assignments.^{6,41} This operation was carried out in GRASS through the module *r.kappa*,^{33,39} a variant of the statistics extraction facility (*r.stats*), using the comparison functionality to generate confusion matrices. In this way, it was possible to evaluate the percentage accuracy of the overall map and of each class, as well as to identify the type of errors incurred and discuss the relative causes and/or hypothesize postclassification solutions (see Sec. 4.2).

To evaluate the significance of single-class spectral signatures for identifying the homogeneous subsets distinguishable in the distribution of this dataset, a two-way (vegetation classes, spectral bands) analysis of variance (ANOVA) and a *post hoc* test [Tukey's honestly significant difference (HSD)] were executed. The halophytic communities (**halveg**), whose spectral response is influenced by the high level of sand in soil, and the woodlands **BoswE**, characterized by low cover, not comparable with other woody formations, were excluded from this analysis.

In order to discuss the spectral features of the mapped plant communities, the mean (\pm SD), minimum, and maximum pixel values of each vegetation class in the five bands of the RapidEye image were extracted in GRASS through the module *r.statistics*, dedicated to spatial statistics.^{33,39} In addition, the normalized difference vegetation index (NDVI) was calculated with *r.mapcalc*,^{33,39} and the same statistics were computed as described before.

4 Results and Discussion

The application of two different classification methods resulted in two versions of the vegetation map, both characterized by a dominance of *Croton socotranus* shrublands. The ML classification, owing to the independent assignment of single cells, is characterized by a high number of isolated pixels, while the GMD-SMAP methodology produced a continuous and homogeneous representation of the plant communities, with fine detail and remarkable precision in mapping the intricate vegetation mosaic of the Haggeher mountains (Fig. 3).

4.1 Distinction Between Spectral Signatures

From an initial dataset comprising 26 vegetation classes, only 19 significantly different groups (Table 1) were recognized by ANOVA and Tukey's HSD *post hoc* test. Some spectral signatures (e.g., **ComSt** and **CrSar**) tend to overlay with others, owing to the similarity of the corresponding vegetation communities or to their heterogeneous cover. In the graphs reporting the mean, minimum, and maximum values (numerical pixel values of the considered band) of the spectral response of these classes [Fig. 4(a) and 4(b)], the wide range of

Table 1 Single-class spectral signatures grouped in homogeneous subsets on the basis of the *post hoc* test (Tukey's HSD) performed after two-way ANOVA. The significance related to every subset is reported in the last row.

class	1	2	3	4	5	6	7	8	9	10	11	12	13	14	15	16	17	18	19
BoswA	4070.11	0	0	0	0	0	0	0	0	0	0	0	0	0	0	0	0	0	0
LeuPi	4219.62	0	0	0	0	0	0	0	0	0	0	0	0	0	0	0	0	0	0
CoelHy	0	4480.94	0	0	0	0	0	0	0	0	0	0	0	0	0	0	0	0	0
TrCep	0	4702.64	0	0	0	0	0	0	0	0	0	0	0	0	0	0	0	0	0
ComSt	0	4726.47	0	0	0	0	0	0	0	0	0	0	0	0	0	0	0	0	0
PhDac	0	4976.28	4726.47	4976.28	0	0	0	0	0	0	0	0	0	0	0	0	0	0	0
DracC	0	0	0	5205.4	5205.4	0	0	0	0	0	0	0	0	0	0	0	0	0	0
CrSar	0	0	0	5357.15	5357.15	0	0	0	0	0	0	0	0	0	0	0	0	0	0
water	0	0	0	0	5412.99	5412.99	0	0	0	0	0	0	0	0	0	0	0	0	0
Buxan	0	0	0	0	5660.46	5660.46	5660.46	0	0	0	0	0	0	0	0	0	0	0	0
Mangr	0	0	0	0	0	0	5838.95	5838.95	6055.09	0	0	0	0	0	0	0	0	0	0
HeCon	0	0	0	0	0	0	0	6055.09	6055.09	0	0	0	0	0	0	0	0	0	0
JatAd	0	0	0	0	0	0	0	0	6238.69	0	0	0	0	0	0	0	0	0	0
PanAt	0	0	0	0	0	0	0	0	0	6640.55	0	0	0	0	0	0	0	0	0
roads	0	0	0	0	0	0	0	0	0	0	7361.14	0	0	0	0	0	0	0	0
CrSoc	0	0	0	0	0	0	0	0	0	0	0	7907.06	0	0	0	0	0	0	0
TephA	0	0	0	0	0	0	0	0	0	0	0	0	8195.91	0	0	0	0	0	0
Crprs	0	0	0	0	0	0	0	0	0	0	0	0	8439.67	0	0	0	0	0	0
JusRi	0	0	0	0	0	0	0	0	0	0	0	0	0	9055.23	0	0	0	0	0
DacBo	0	0	0	0	0	0	0	0	0	0	0	0	0	9100.88	9100.88	0	0	0	0
PulSt	0	0	0	0	0	0	0	0	0	0	0	0	0	0	9315.63	9315.63	0	0	0
rocks	0	0	0	0	0	0	0	0	0	0	0	0	0	0	0	9369.25	0	0	0
IndPs	0	0	0	0	0	0	0	0	0	0	0	0	0	0	0	0	10726.29	0	0
sndyg	0	0	0	0	0	0	0	0	0	0	0	0	0	0	0	0	10909.34	0	0
sett	0	0	0	0	0	0	0	0	0	0	0	0	0	0	0	0	0	11315.58	0
dunes	0	0	0	0	0	0	0	0	0	0	0	0	0	0	0	0	0	0	15807.38
Sig.	0.928	0.094	0.078	0.181	0.365	0.086	0.692	0.282	0.635	1	1	1	0.101	1	0.295	1	0.641	1	1

Table 2 Confusion matrix generated for the accuracy assessment of the map produced with the ML classification method.

Reference																															
AcEdg	BowA	BowE	Ruxan	CoHy	ComSt	CrSar	CrSc	DacRo	DracC	LeuPi	HcCon	IndPs	JatAd	JusRi	PanAt	PalSt	TephA	TrCep	Mangr	PhDac	Cypis	rocks	sndvg	dunes	water	settl	roads	Row Sum	User Acc.	% Comm	
49	0	0	0	0	0	0	0	0	2	0	0	0	0	0	0	0	0	0	0	0	0	0	0	0	1	0	0	52	0.942	5.709	
BowA	0	38	0	3	13	0	0	0	0	0	15	0	0	0	0	0	0	0	31	0	0	0	0	0	0	0	0	100	0.380	62.000	
BowE	0	0	54	8	0	1	0	0	0	0	0	29	0	0	0	0	0	0	0	0	0	0	0	0	0	0	92	0.587	41.304		
Ruxan	0	1	0	50	0	11	9	19	0	10	2	18	0	14	0	4	1	0	1	0	0	0	0	0	6	0	147	0.340	65.986		
CoHy	0	1	0	0	25	0	0	0	22	15	0	0	0	0	0	0	0	12	0	0	0	0	0	0	0	0	78	0.321	67.949		
ComSt	0	0	6	2	126	26	2	0	19	1	3	0	1	0	0	0	0	12	0	3	0	0	0	0	0	0	201	0.627	37.313		
CrSar	0	0	1	2	3	23	4	0	4	2	35	0	1	0	13	0	0	8	0	0	0	0	0	0	6	0	105	0.219	78.005		
CrSc	0	0	0	1	0	0	14	292	2	0	0	9	1	11	0	4	13	21	0	0	1	0	0	0	0	1	2	372	0.785	21.505	
DacRo	0	0	0	0	0	0	12	96	0	0	0	0	0	1	0	29	8	0	0	0	0	0	0	0	0	0	146	0.658	34.247		
DracC	0	0	4	5	0	27	13	8	0	97	2	20	0	11	0	5	0	0	2	0	0	0	0	0	0	0	0	194	0.500	50.000	
LeuPi	0	0	0	0	14	0	0	0	0	70	0	0	0	1	0	0	0	0	39	0	0	0	0	0	0	0	0	124	0.565	43.548	
HcCon	0	0	5	4	2	7	56	29	0	14	0	272	0	6	0	11	0	1	8	0	0	0	0	0	0	0	0	419	0.649	35.084	
IndPs	0	0	0	0	0	2	32	0	0	0	0	0	36	0	4	12	13	6	0	0	0	0	0	3	0	0	0	114	0.316	68.421	
JatAd	0	0	0	17	0	4	10	60	0	11	0	28	0	136	0	10	2	0	0	0	0	0	0	0	0	0	0	282	0.482	51.773	
JusRi	0	0	0	0	0	0	0	8	1	0	0	0	0	0	70	2	0	0	0	0	0	0	0	0	0	0	0	81	0.864	13.580	
PanAt	0	0	0	0	0	0	0	0	0	0	0	25	1	21	0	210	0	0	0	0	0	1	1	0	0	0	0	269	0.781	21.933	
PalSt	0	0	0	3	0	0	0	32	13	0	0	3	0	3	1	0	116	9	0	0	0	0	0	0	0	0	0	181	0.641	35.912	
TephA	0	0	0	0	0	0	0	58	1	0	0	0	1	0	0	1	8	96	0	0	0	0	0	0	0	0	0	175	0.549	45.143	
TrCep	0	1	0	1	2	8	9	4	0	2	5	13	0	0	0	0	0	0	49	0	0	0	0	0	0	0	0	94	0.521	47.872	
Mangr	0	0	0	0	0	0	0	0	0	0	0	0	0	0	0	0	0	0	112	0	0	0	0	0	0	0	0	112	1.000	0.000	
PhDac	0	0	0	4	0	9	0	0	0	0	0	0	0	1	0	0	0	0	0	214	0	0	0	0	21	0	0	249	0.859	14.056	
Cypis	0	0	0	0	0	0	3	10	0	0	0	10	0	0	10	1	0	0	0	0	64	0	0	0	0	0	0	98	0.653	34.694	
rocks	2	0	0	0	0	0	0	30	0	0	0	1	0	0	1	0	6	4	0	0	0	0	63	0	0	0	1	108	0.583	41.607	
sndvg	0	0	0	0	0	0	5	0	0	0	0	0	0	0	0	0	3	1	0	0	0	0	70	0	0	0	79	0.886	11.302		
dunes	1	0	0	0	0	0	0	7	0	0	0	0	0	0	0	0	0	2	0	0	0	0	0	172	0	8	0	190	0.905	9.474	
water	0	0	0	1	0	2	9	6	0	2	0	8	0	7	0	0	1	0	0	0	1	0	0	0	119	0	0	156	0.763	23.718	
settl	1	0	0	0	0	0	0	9	0	0	0	0	0	0	0	1	5	0	0	0	0	0	0	0	7	0	0	218	0.894	10.550	
roads	0	0	0	0	0	0	0	0	0	0	0	0	0	0	0	0	0	0	0	0	0	0	0	0	0	0	124	1.000	0.000		
Col Sum	53	40	65	102	51	211	177	637	113	161	119	489	39	213	77	282	194	153	162	112	220	65	64	73	180	160	222	126	4560		
Pred. Acc.	0.925	0.980	0.831	0.490	0.490	0.597	0.130	0.458	0.850	0.602	0.588	0.556	0.923	0.638	0.909	0.745	0.598	0.627	0.302	1.000	0.973	0.985	0.984	0.959	0.956	0.744	0.878	0.984			
% Observed Correct	7.547	5.000	16.923	50.980	50.980	40.284	87.006	54.160	15.044	39.752	41.176	44.376	7.692	36.150	9.091	25.532	40.206	37.255	60.753	0.000	2.727	1.538	1.563	4.110	4.444	25.625	12.162	1.587			66.623

Table 3 Confusion matrix generated for the accuracy assessment of the map produced with the SMAP classification method.

		Reference																										Row Sum	User Acc.	% Comm	
		AcEdg	BowA	BowE	Buxan	CoHy	ComSt	CrSar	CrSoc	DacRo	DracC	LeuPl	HtCon	InuPs	JustAd	JustRl	PanAt	PuSt	TephA	TrCup	Mangr	PhBac	Crprs	rocks	savg	dunes	water				settl
AcEdg	52	0	0	0	0	0	0	0	0	1	0	0	0	0	0	0	0	0	0	0	0	0	0	0	0	0	0	0	53	0.981	1.887
BowA	0	40	0	0	0	1	0	0	0	0	0	0	0	0	0	0	0	0	0	0	0	0	0	0	0	0	0	0	41	0.976	2.439
BowE	0	0	64	0	0	0	0	0	0	0	0	0	0	0	0	0	0	0	0	0	0	0	0	0	0	0	0	0	70	0.914	8.571
Buxan	0	0	0	73	0	0	1	2	0	0	0	6	0	0	0	0	0	0	0	0	0	0	0	0	0	0	0	0	82	0.890	10.976
CoHy	0	0	0	0	32	0	0	0	0	0	21	22	0	0	0	0	0	0	0	0	0	0	0	0	0	0	0	0	75	0.427	57.333
ComSt	0	0	0	5	3	187	13	0	0	1	0	3	0	0	0	3	0	0	0	0	1	0	0	0	0	0	0	0	216	0.866	13.426
CrSar	0	0	0	0	7	144	7	0	8	3	47	0	0	12	0	0	12	0	0	6	0	0	0	0	0	1	0	0	235	0.613	38.723
CrSoc	0	0	0	1	0	0	11	513	0	0	0	9	1	16	0	1	12	13	0	0	0	0	0	0	0	0	0	0	577	0.889	11.092
DacRo	0	0	0	0	0	0	0	12	101	0	0	0	0	2	0	4	0	0	0	0	0	0	0	0	0	0	0	0	119	0.849	15.126
DracC	0	0	0	0	0	0	10	0	14	0	151	4	0	7	0	0	0	0	0	1	0	0	0	0	0	0	0	0	187	0.807	19.251
LeuPl	0	0	0	0	0	13	0	0	0	0	87	2	0	0	0	0	0	0	0	0	0	0	0	0	0	0	0	0	102	0.853	14.706
HtCon	0	0	1	3	0	0	0	10	0	0	0	374	0	0	0	0	0	0	0	7	0	0	0	0	0	0	0	0	395	0.947	5.316
InuPs	0	0	0	0	0	0	0	15	0	0	0	0	38	0	2	1	6	1	0	0	0	0	0	0	0	0	2	0	65	0.585	41.538
JustAd	0	0	0	14	0	0	2	12	0	0	0	11	0	161	0	1	3	0	0	0	0	0	0	0	0	0	0	0	204	0.789	21.078
JustRl	0	0	0	0	0	0	0	0	0	0	0	0	0	0	73	0	0	0	0	0	0	0	0	0	0	0	0	0	73	1.000	0.000
PanAt	0	0	0	0	0	0	0	0	0	0	0	0	0	28	0	262	0	0	0	0	0	0	0	0	0	0	0	0	290	0.903	9.655
PuSt	0	0	0	0	0	0	0	17	12	0	0	0	0	0	0	0	163	0	0	0	0	0	0	0	0	0	0	0	192	0.849	15.104
TephA	0	0	0	0	0	0	0	2	0	0	0	0	0	0	0	0	1	138	0	0	0	0	0	0	0	0	0	0	141	0.979	2.128
TrCup	0	0	0	0	3	0	4	0	0	8	8	0	0	0	0	0	0	148	0	0	0	0	0	0	0	0	0	0	171	0.865	13.450
Mangr	0	0	0	0	0	0	0	0	0	0	0	0	0	0	0	0	0	0	112	0	0	0	0	0	0	0	0	0	112	1.000	0.000
PhBac	0	0	0	0	0	0	6	0	0	0	0	0	0	1	0	0	0	0	0	0	219	0	0	0	0	0	0	0	226	0.969	3.097
Crprs	0	0	0	0	0	0	2	3	0	0	0	3	0	0	0	2	0	0	0	0	0	65	0	0	0	0	0	0	75	0.867	13.333
rocks	0	0	0	0	0	0	0	22	0	0	0	0	0	0	0	0	5	0	0	0	0	0	64	0	0	0	0	0	91	0.703	29.670
savg	0	0	0	0	0	0	0	1	0	0	0	0	0	0	0	0	0	0	0	0	0	0	73	0	0	0	0	0	74	0.986	1.351
dunes	0	0	0	0	0	0	0	0	0	0	0	0	0	0	0	0	0	0	0	0	0	0	0	0	100	0	0	0	100	1.000	0.000
water	0	0	0	0	0	0	0	0	0	0	0	0	0	0	0	0	0	0	0	0	0	0	0	0	0	159	0	0	159	1.000	0.000
settl	1	0	0	0	0	0	0	7	0	0	0	0	0	0	0	0	0	1	0	0	0	0	0	0	0	0	220	0	229	0.961	3.930
roads	0	0	0	0	0	0	0	0	0	0	0	0	0	0	0	0	0	0	0	0	0	0	0	0	0	0	0	0	126	1.000	0.000
Col Sum	53	40	65	102	81	211	177	637	113	161	119	489	39	213	77	282	194	153	162	112	220	65	64	73	100	160	232	126	4480		
Prod.Acc.	0.981	1.000	0.985	0.716	0.627	0.886	0.814	0.805	0.894	0.938	0.731	0.765	0.974	0.756	0.948	0.929	0.840	0.902	0.914	1.000	0.995	1.000	1.000	1.000	1.000	0.994	0.991	1.000		% Observed Correct	87.924
% Omm	1.887	0.000	1.538	28.431	37.255	11.374	18.644	19.466	10.619	6.211	26.891	23.517	2.564	24.413	5.195	7.092	15.979	9.804	8.642	0.000	0.455	0.000	0.000	0.000	0.000	0.925	0.991	0.000			

variability in one or more bands is evident. In particular, a high range of values in the red band, related to the absorption of photosynthetically active radiation (PAR), can be connected to the heterogeneous cover shown by the corresponding plant community in different contexts. This can be observed in the red band both for **ComSt** (Max – Min = 3370), forming dense woods in the sheltered ravines near water courses, while notably clearer and scattered in exposed areas near to the coast, and **CrSar** (Max – Min = 5571), with shrubland sometimes closed and associated to an abundant presence of other shrub species, sometimes open and with herbaceous communities like **HeCon**, or also very scattered on bare rocky substrata. Another cause of overlap lies in the similar trends observed in the spectral response of some classes, such as **CrSar** and **DracC** [Fig. 4(c)]. The overlay of the two signatures is due to the local spatial mixture of these communities.²⁴ The errors herein described are due to the incapacity of the classic methodology to distinguish between subclasses,^{5,16} resulting in an increase of range in spectral signatures and, therefore, in high probabilities of overlap and misclassification. Moreover, the independent assignment of single pixels operated by the ML classification is not able to distinguish mosaicked formations, generating further errors, causing this classification method to be less accurate.^{5,16,34}

The application of the GMD model for the extraction of spectral signatures allowed us to identify and describe a variable number of subclasses for heterogeneous formations (Fig. 5). Two subsignatures were recorded for **ComSt** [Fig. 5(a)], five for **CrSar** and **CrSoc** [Fig. 5(b) and 5(c)], and four for **HeCon** and **PanAt** grasslands [Fig. 5(d) and 5(e)]. These subsets represent additional information that gets lost with the extraction of single-class signatures, but proves to be effective in increasing the classification accuracy, as earlier observed.^{5,16} It is interesting to see how some of the subclasses show a very high value in the red band, representing poor or disturbed variants, observable in the field but not described by single signatures [Fig. 5(c) and 5(e)]. Multiclass signatures, more complete and accurate, allow the distinction between different

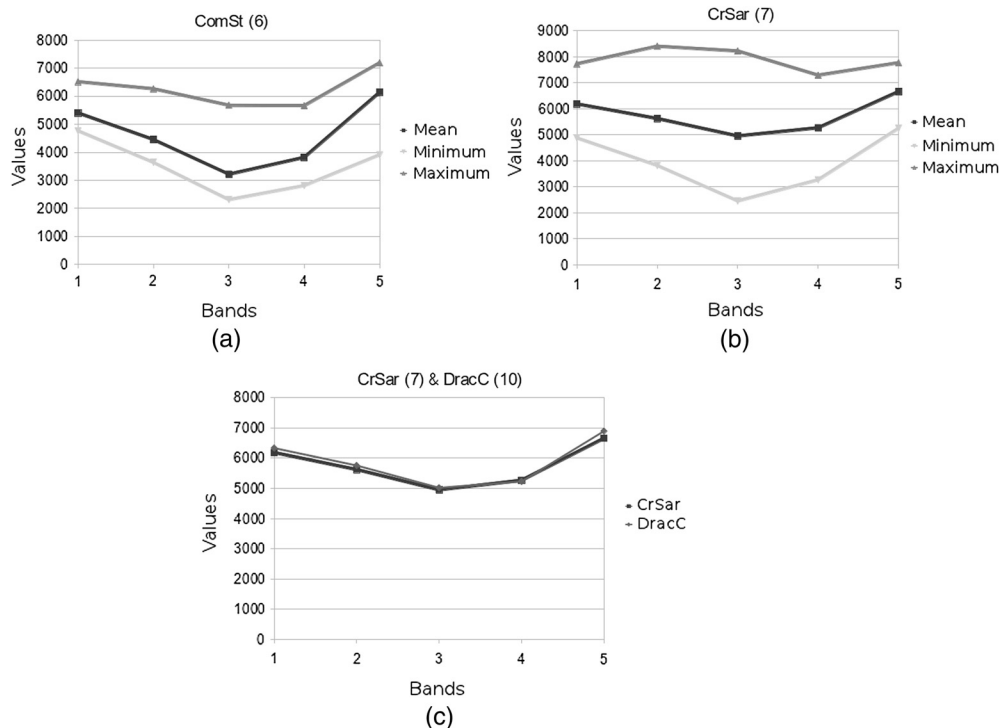


Fig. 4 Single-class spectral signatures of some classes of the vegetation map. The first two graphs show the mean, minimum, and maximum values of the spectral response in the various bands of the satellite images for classes **ComSt** (a) and **CrSar** (b). The strong similarity in the reflectance of classes **CrSar** and **DracC** is shown in graph (c).

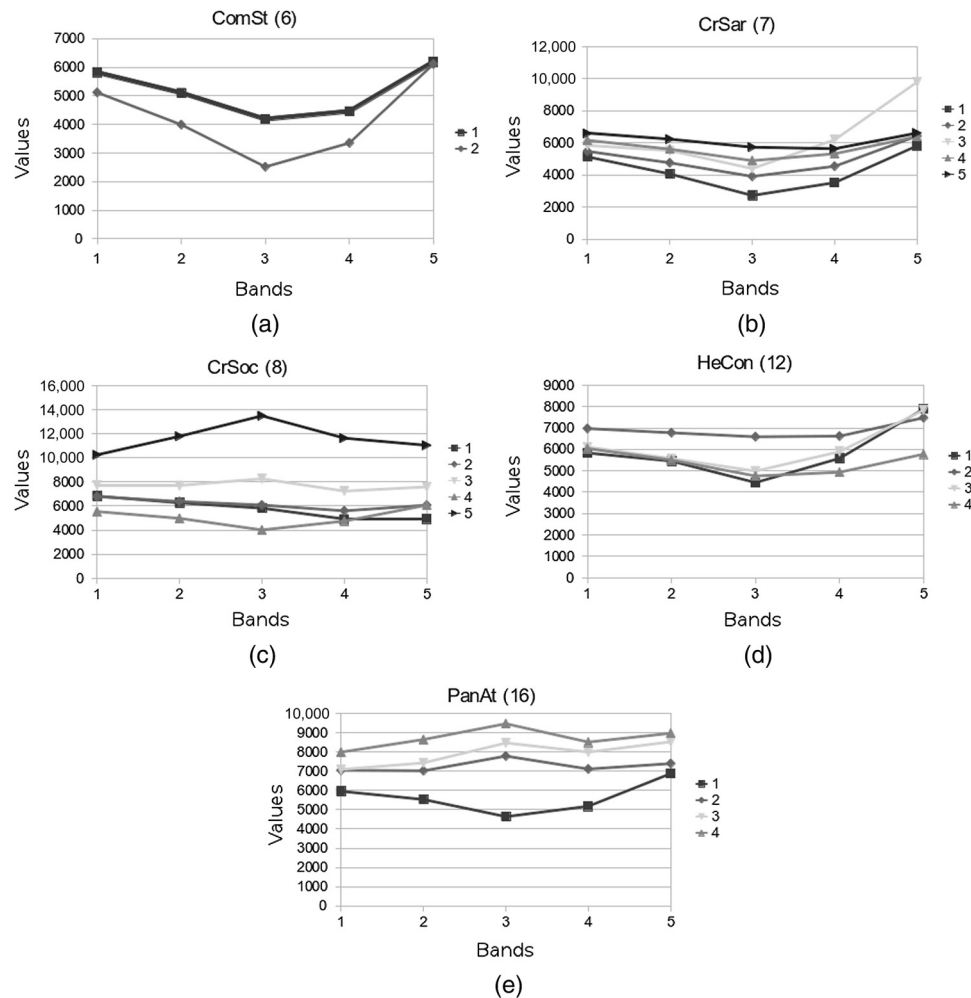


Fig. 5 Multiclass GMD spectral signatures of some vegetation typologies mapped, showing the values of the spectral response in the various bands of the satellite image for each subsignature extracted for classes **ComSt** (a), **CrSar** (b), **CrSoc** (c), **HeCon** (d), and **PanAt** (e).

coverages and compositions of heterogeneous formations, resulting in a significantly superior accuracy of the classified map.

4.2 Map Accuracy

The confusion matrices computed for the accuracy assessment of the classified maps are shown in Tables 2 and 3. The final accuracy represents the most evident and meaningful difference between the two classification methods applied.

Consistent with earlier findings,^{5,16,17,38} SMAP proved to be notably more effective in representing the extreme variability and patchiness characterizing the vegetation of Socotra. This methodology reached an overall 21.3% greater accuracy (Table 3) than the ML method, which incurred high levels of misclassification between similar or contiguous plant communities,^{9,17} alongside elevated percentages of commission and/or omission of the most heterogeneous typologies (Table 2). An example is represented by the high level of error observed in the classification of **CrSar** shrublands (commission = 78%, omission = 87%). As explained before, the different coverages shown by this formation cause excessive amplitude of its spectral signature, resulting in a loss of significance and information. Consequently, the class is easily confused with others, as happens with **HeCon**, dynamically linked to **CrSar**, and with **DracC**. The herbaceous communities, on the other hand, are often present under a variety of ecologically different contexts.²⁴ **HeCon**, for example, is widespread on granitic and calcareous substrata, from the

lower highlands to the mountain top, where it alternates with woodlands and shrublands in a complex mosaic. These situations cause the overlay of spectral signatures, and at the same time the coincidence of environmental parameters does not allow applications of postclassification filters. A similar situation can be observed for the woodlands and shrublands of the Haggeher mountains. Misclassifications are notably high in these typologies (e.g., **TrCep**, omission = 69.7%), even if in some cases postclassification correction is possible. These errors and information losses cause the classification accuracy to be <67%.

The SMAP method, based on multiclass signatures and on a sequential segmentation for the classification process, proves to be more effective in representing such a heterogeneous vegetation mosaic, avoiding at the same time an excessive fragmentation of the map and, therefore, reducing information losses and misclassifications.^{5,16} This results in a marked increase in the final accuracy (Table 3) of the map produced (producer's accuracy), particularly for the classes mistook by the ML method (**CoeHy** + 13%, **LeuPi** + 15.7%, **HeCon** + 21%, **TrCep** + 61.1%, **CrSar** + 68.4%). The final accuracy reached exceeds 87%, a satisfying result in light of the high number of classes considered and the heterogeneity of their coverage and environmental patterns. The application of postclassification filters allowed for an increase in the accuracy level (by 5%) to the values reported above.

4.3 Spectral Features of the Mapped Classes

The analysis of the spectral features of the mapped classes reveals differences in landscape structure, canopy cover, biomass production, and disturbance regime of the corresponding vegetation communities. Table 4 shows the minimum, maximum, and mean (\pm SD) pixel values for each spectral band, and the NDVI values of each vegetation community represented in the produced map.

The red band values are correlated to the absorption of PAR and influenced by the abundance of bare soil substrate.^{6,28} Consistent with the described characteristics of the analyzed plant communities,^{21,24} the vegetation classes with the most scattered cover and the poorest biomass production show high values in the red wavelengths; this is the case of **AcEdg**, **DacRo**, **IndPs**, **PulSt**, **TephA**, and **Crprs**. In particular, the low standard deviation associated with these high values highlights the constant semi-desertic character of **DacRo** grasslands and **JusRi** dwarf shrublands, among the communities with lowest cover and highest percentage of bare soil on the island.²⁴ Conversely, classes **LeuPi**, **CoeHy**, and **TrCep** have the lowest mean pixel values, dispersion, and standard deviation in the red band. In fact, these woodlands and shrublands forming the mountain vegetation mosaic of the Haggeher massif are characterized by a close and continuous cover, and represent the most dense communities of the island.^{21,24} Similar characteristics can be observed for *Boswellia ameero* woodlands, which show the same trend in the red band values.^{24,27} A particular case among woodlands is represented by **DracC**, characterized by the highest standard deviation of pixel values in this band. This is due to the high heterogeneity that can be observed in the cover of *Dracaena cinnabari* woodlands;^{20,24,26} these communities are close and continuous (often linked with *Leucas haggiriensis* and *Pittosporum viridiflorum* shrublands) on the central granite massif, but show a scattered cover on the limestone plateaux, which are often related to *Croton sarcocarpus* shrublands (**CrSar**). Similar trends can be observed for **CrSoc**, **JatAd**, and **BoswE**, both characterized by a high variability in structure and canopy cover.^{24,27} In particular, *Croton socotranus* shrublands, the most widespread vegetation class in Socotra, has the most wide range of structures and covers, influenced by morphology, microclimate, and disturbance regime.^{21,24} Among herbaceous communities, the high dispersion and standard deviation of pixel values in the red band for **PanAt** can be related to the differences in canopy cover due to the uneven spatial distribution of disturbance brought by livestock (location of settlements, transhumance, etc.).^{19,20,22,24} The other important pasture in Socotra, **HeCon** grasslands, has lower red values and dispersion; this is probably due to the fact that this community comprehends the high mountain grasslands, which are subject to a lower disturbance regime.^{19,20,22,24}

The described trends can be observed more accurately by analyzing the pixel values of the Red Edge band. This band has been observed to be correlated with chlorophyll concentration while being insensitive to soil background and atmospheric effects.^{28,31} As a matter of fact, the

Table 4 Pixel values in the five spectral bands of RapidEye image and NDVI values of the vegetation classes included in the produced map. Minimum, maximum, and mean (\pm standard deviation) values are reported.

	BAND 1 (Blue)			BAND 2 (Green)			BAND 3 (Red)			BAND 4 (Red Edge)			BAND 5 (NIR)			NDVI		
	Minimum	Mean \pm SD	Maximum	Minimum	Mean \pm SD	Maximum	Minimum	Mean \pm SD	Maximum	Minimum	Mean \pm SD	Maximum	Minimum	Mean \pm SD	Maximum	Minimum	Mean \pm SD	Maximum
AcEdg	4774	10175 \pm 962	16230	3275	10559 \pm 1310	18235	1765	10851 \pm 1728	18203	2153	9618 \pm 1342	16003	6768	9886 \pm 1143	14746	-0.187	-0.050 \pm 0.038	0.289
BoswA	4035	5046 \pm 280	7398	2553	3746 \pm 251	6371	1299	2212 \pm 211	4942	1402	2900 \pm 245	5088	1884	4980 \pm 699	8086	0.058	0.395 \pm 0.068	0.602
BoswE	4722	7301 \pm 2912	31932	2825	6817 \pm 2889	31300	1824	5973 \pm 2805	28544	1858	6272 \pm 2120	23796	1877	8087 \pm 1606	21161	-0.297	0.169 \pm 0.110	0.601
Buxan	4113	6984 \pm 2947	34121	2445	6071 \pm 3025	33153	1123	5051 \pm 2915	30590	1242	4853 \pm 2360	25543	925	5492 \pm 2057	22615	-0.476	0.064 \pm 0.083	0.607
CoelHy	3824	5306 \pm 382	10229	2560	4553 \pm 499	10072	1352	3074 \pm 522	8939	1440	4361 \pm 548	8705	3711	6949 \pm 671	10369	0.202	0.390 \pm 0.046	0.561
ComSt	4170	5878 \pm 583	13530	2517	4931 \pm 778	13397	1211	3742 \pm 977	12971	1319	4135 \pm 831	11274	1192	5789 \pm 946	13379	-0.465	0.225 \pm 0.085	0.573
CrSar	4184	6596 \pm 673	13988	2603	6058 \pm 817	13955	1213	5492 \pm 966	14660	1438	5534 \pm 716	13739	2892	6470 \pm 494	10395	-0.444	0.090 \pm 0.064	0.533
CrSoc	3695	8049 \pm 1459	37585	2268	8047 \pm 1777	37679	1149	8147 \pm 2212	34137	997	7348 \pm 1817	28724	1046	7554 \pm 1610	25268	-0.516	-0.027 \pm 0.052	0.496
DacRo	7646	8839 \pm 279	9966	6881	9363 \pm 451	11111	7501	10071 \pm 688	12642	6123	8743 \pm 571	11043	5772	8389 \pm 491	10692	-0.175	-0.083 \pm 0.015	-0.014
DiacC	4416	7895 \pm 3971	37585	2743	7284 \pm 4100	37433	1639	6327 \pm 4049	34182	1575	6280 \pm 3186	28724	1932	7448 \pm 2588	25167	-0.341	0.127 \pm 0.114	0.418
LeuPi	3877	4876 \pm 338	7518	2328	3798 \pm 568	7081	1009	2283 \pm 511	5579	1159	3239 \pm 889	6229	806	5075 \pm 2042	9477	0.021	0.329 \pm 0.195	0.628
HeCon	4344	6871 \pm 647	12514	2775	6299 \pm 887	13518	1525	5648 \pm 1242	14600	1027	5508 \pm 1217	13274	806	6114 \pm 1598	12150	-0.562	0.036 \pm 0.111	0.569
IndPs	4366	9303 \pm 1368	30897	3253	10144 \pm 1810	29984	1963	11365 \pm 2166	27892	2012	9906 \pm 1724	23246	1993	9641 \pm 1365	20300	-0.242	-0.074 \pm 0.034	0.274
JatAd	3982	7099 \pm 2079	35076	2332	6407 \pm 2209	34549	1114	5767 \pm 2181	31148	1134	5452 \pm 1888	26066	921	6032 \pm 1988	22768	-0.546	0.024 \pm 0.086	0.504
JusRi	5387	8743 \pm 875	32593	3923	9375 \pm 868	32113	2662	10243 \pm 968	29346	2086	9013 \pm 701	24314	1739	8751 \pm 599	21531	-0.356	-0.071 \pm 0.021	0.155
PanAt	4760	7843 \pm 2620	37674	3315	7898 \pm 2582	37652	1987	7995 \pm 2584	34636	1631	7633 \pm 1932	28988	1485	8270 \pm 1559	25473	-0.304	0.034 \pm 0.071	0.354
PulSt	4962	8748 \pm 1240	10742	3440	9220 \pm 1783	11801	2489	9911 \pm 2202	13292	2437	8679 \pm 1757	11447	4412	8405 \pm 1464	11232	-0.170	-0.069 \pm 0.041	0.105
TephA	5186	8453 \pm 877	12697	3877	8788 \pm 1202	13596	3529	9370 \pm 1497	13746	2944	8222 \pm 1308	11577	3836	7989 \pm 1257	11430	-0.242	-0.074 \pm 0.033	0.220
TrCep	3519	5191 \pm 387	11355	2153	4129 \pm 611	10072	1040	2779 \pm 625	8368	1042	3469 \pm 932	8305	814	5054 \pm 1904	11474	0.015	0.262 \pm 0.159	0.624
Mangr	5943	7080 \pm 357	8414	4968	6005 \pm 332	7394	2827	3584 \pm 223	4304	3624	4761 \pm 303	6016	6412	8278 \pm 524	10721	0.283	0.415 \pm 0.036	0.538
Cprrs	5394	7999 \pm 404	14455	4090	8209 \pm 492	12782	3032	8416 \pm 442	13005	3544	7874 \pm 393	12711	6153	8363 \pm 328	9806	-0.067	0.002 \pm 0.020	0.098

dispersion and standard deviation of Red Edge pixel values are lower than in the red band, since the influence of the variability in canopy cover can be considered as not significant. It is worth noting that the highest mean pixel values in this range are related to the most disturbed herbaceous communities. In fact, Red Edge has also been used to evaluate N status of crops and grasslands.^{28,32} Among the mapped classes, this band highlights the heavy disturbance regime affecting **DacRo**, **IndPs**, and **TephA** grasslands, as well as **JusRi** and **PulSt** dwarf shrublands.^{20,21,24} In particular, as a consequence of the overwhelming grazing pressure, **TephA** and **PulSt** communities are dominated by aromatic, unpalatable plants, while **JusRi**, **IndPs**, and **DacRo** formations are characterized by species with spiny, coriaceous leaves and/or intricate stems.²⁴

The near-infrared (NIR) band is also associated to photosynthetic activity, particularly for the difference between the values in this wavelength and those of the red band.^{2,6,28} To facilitate the identification of the most productive plant communities of Socotra Island, NDVI has been calculated for each of the mapped classes based on red and NIR spectral bands (Table 4). The reported values strongly highlight the profound difference in biomass production between the vegetation typologies of Socotra. Consistent with literature data, field observations, and above considerations, the richest classes are represented by the woodlands and shrublands of Haggeher mountains.^{21,24} Among these, **CoeHy** shows the highest NDVI values, followed by **LeuPi** and **TrCep**. As previously remarked, these communities form landscapes characterized by the most dense vegetation on the island, favored by the lower aridity (due to orographic rainfall and fog condensation) and deeper soils present on the granite massif.^{21,22} **BoswA** woodlands, also located on Haggeher mountains, have similar characteristics, and despite being less thick, their biomass production per individual is higher.^{24,27} These NDVI values are exceeded only by **Mangr**, the most luxuriant vegetation community on the island.^{21,24} The lower NDVI (with high dispersion and standard deviation) observed for other woodlands (**ComSt**, **DracC**, **BoswE**) and shrublands (**CrSoc**, **CrSar**, **JatAd**) is due to the heterogeneous structures and covers characterizing the related formations in different environmental contexts, as explained before in Refs. 21 and 24. Low NDVI values (just above zero) also characterize the two most important pastures of the island, **HeCon** and **PanAt** grasslands, emphasizing the scarcity of forage resource and the high risk of overgrazing for the pastoral systems of Socotra Island.^{19,20,21} The lowest (often below zero) NDVI values stress the poor biomass production and canopy cover of the most disturbed and semi-desertic communities of the island: **AcEdg**, **DacRo**, **IndPs**, **PulSt**, **TephA**, and **Crprs**.^{20,21,24} It is also worth highlighting that at the time of acquisition of the satellite images, these herbaceous communities had already been subject to livestock grazing; thus the canopy cover was not at its maximum level.

5 Conclusions

A detailed vegetation map of Socotra Island (Fig. 3) was produced through the classification of high-resolution satellite images on the basis of classified vegetation surveys. This methodology allowed for the production of a map representing the spatial distribution of plant communities on the island, identified on an ecological and phytosociological basis, and mapped with a segmentation method. The georeferenced vegetation relevés acted as a reference for spectral signature extraction and RS image classification through two methodologies, whose effectiveness was compared through the accuracy assessment of the classified maps. The spectral responses of the various classes, with particular regard to the subsignatures extracted through the GMD method, seem coherent with the ecological and physiological characteristics of the corresponding plant communities. Nevertheless, the single-class signatures also provided useful information for the identification of natural similarity between different classes and inaccuracies in the training points in the preliminary phases of this study.

Information on the ecological characteristics of the plant communities allowed the application of different filters to distinguish between similar spectral signatures and reduce the commission and omission errors. Postclassification processing allowed for a further increase in the confidence of the map.

The SMAP classification method, with an accuracy of 87%, proved to be capable of reflecting the heterogeneity of the vegetation cover, mitigating class confusion, and transposing onto the map the mosaicked landscape configuration, avoiding excessive fragmentation. The ML classification method generated a patchy map, less precise in the identification and distinction of contiguous and mixed formations, and 20% less accurate than SMAP. These results suggest that, even if more difficult to apply (owing to data precision and time demands), the GMD–SMAP method better adapts to complex vegetation landscapes than the statistical ML approach. The combined approach adopted in this study allowed to benefit from all the methodologies applied, each useful in their own ways, even if differing in effectiveness, to obtain useful data for the description of the considered vegetation classes. The analysis and discussion of the spectral features of the mapped classes is consistent with field observations and literature information about the characteristics of the corresponding vegetation communities. This represents a further confirmation of the ecological accuracy obtained in mapping the heterogeneous arid environments of Socotra through the described approach.

For all the above considerations, the produced map (Fig. 3) can be considered as the final version of the vegetation map of Socotra Island and will provide a valuable knowledge base and reference for planning future conservation and sustainable development initiatives aimed to protect the unique biodiversity of Socotra.

Acknowledgments

This research was supported by the General Directorate for Development Co-operation (Italian Development Co-operation) and the Government of Yemen (Cudarat project—AID 9064). Our thanks go to the project manager Andrea Mao and to all the technical and institutional staff who made the project, and therefore this study, possible. A particular mention goes to the Botany Unit members Ahmed Issa, Fahmi Abdulla, and Abdulwhab Saad.

References

1. A. W. Küchler and I. S. Zonneveld, *Vegetation Mapping*, Dr W. Junk, Dordrecht, NL (1988).
2. X. M. Xiao et al., “Modeling gross primary production of temperate deciduous broadleaf forest using satellite images and climate data,” *Remote Sens. Environ.* **91**(2), 256–270 (2004), <http://dx.doi.org/10.1016/j.rse.2004.03.010>.
3. C. He et al., “Zoning grassland protection area using remote sensing and cellular automata modelling, a case study in Xilingol steppe grassland in northern China,” *J. Arid Environ.* **63**(4), 814–826 (2005), <http://dx.doi.org/10.1016/j.jaridenv.2005.03.028>.
4. S. K. Langley, H. M. Cheshire, and K. S. Humes, “A comparison of single date and multi-temporal satellite image classifications in a semi-arid grassland,” *J. Arid Environ.* **49**(2), 401–411 (2001), <http://dx.doi.org/10.1006/jare.2000.0771>.
5. D. G. Gavin and F. S. Hu, “Bioclimatic modelling using Gaussian mixture distributions and multiscale segmentation,” *Glob. Ecol. Biogeogr.* **14**(5), 491–501 (2005), <http://dx.doi.org/10.1111/geb.2005.14.issue-5>.
6. Y. Xie, Z. Sha, and M. Yu, “Remote sensing imagery in vegetation mapping: a review,” *J. Plant Ecol.* **1**(1), 9–23 (2008), <http://dx.doi.org/10.1093/jpe/rtm005>.
7. M. L. Nordberg and J. Evertson, “Vegetation index differencing and linear regression for change detection in a Swedish mountain range using Landsat TM and ETM+ imagery,” *Land Degrad. Dev.* **16**(2), 139–149 (2003).
8. O. Z. Akasheh, C. M. U. Neale, and H. Jayanty, “Detailed mapping of riparian vegetation in the middle Rio Grande River using high resolution multi-spectral airborne remote sensing,” *J. Arid Environ.* **72**(9), 1734–1744 (2008), <http://dx.doi.org/10.1016/j.jaridenv.2008.03.014>.
9. K. Krål and J. Pavlis, “The first detailed land-cover map of Socotra Island by Landsat/ETM + data,” *Int. J. Remote Sens.* **27**(15), 3239–3250 (2006), <http://dx.doi.org/10.1080/01431160600646557>.

10. H. Schmidt and A. Karnieli, "Remote sensing of the seasonal variability of vegetation in a semi-arid environment," *J. Arid Environ.* **45**(1), 43–59 (2000), <http://dx.doi.org/10.1006/jare.1999.0607>.
11. C. Leprieur et al., "Monitoring vegetation cover across semi-arid regions: comparison of remote observations from various scales," *Int. J. Remote Sens.* **21**(2), 281–300 (2000), <http://dx.doi.org/10.1080/014311600210830>.
12. Z. Jiang, J. Li, and W. Dou, "The impact of spatial resolution on NDVI over heterogeneous surface," in *Proc. of 2005 IEEE Int. Geoscience and Remote Sensing Symp.*, pp. 1310–1313, Institute of Electrical and Electronic Engineers, New York, NY (2005).
13. P. S. Laris, "Spatiotemporal problems with detecting and mapping mosaic fire regimes with coarse-resolution satellite data in savanna environments," *Remote Sens. Environ.* **99**(4), 412–424 (2005), <http://dx.doi.org/10.1016/j.rse.2005.09.012>.
14. H. Nagendra and D. Rocchini, "High resolution satellite imagery for tropical biodiversity studies: the devil is in the detail," *Biodivers. Conserv.* **17**(14), 3431–3442 (2008), <http://dx.doi.org/10.1007/s10531-008-9479-0>.
15. M. Hill, G. Asner, and A. Held, "The bio geophysical approach to remote sensing of vegetation in coupled human environment systems—societal benefits and global context," *J. Spat. Sci.* **51**(2), 49–66 (2006), <http://dx.doi.org/10.1080/14498596.2006.9635081>.
16. A. H. Ehsani and F. Quiel, "Efficiency of Landsat ETM+ thermal band for land cover classification of the biosphere reserve 'Eastern Carpathians' (central Europe) using SMAP and ML algorithms," *Int. J. Environ. Res.* **4**(4), 741–750 (2010).
17. D. B. Michelson, M. B. Liljeberg, and P. Pilesjö, "Comparison of algorithms for classifying Swedish landcover using Landsat TM and ERS-1 SAR data," *Remote Sens. Environ.* **71**(1), 1–15 (2000), [http://dx.doi.org/10.1016/S0034-4257\(99\)00024-3](http://dx.doi.org/10.1016/S0034-4257(99)00024-3).
18. A. Guillet et al., "Systemic spatial decision support systems: an integrated, computer aided tool for biodiversity conservation," *Plant Biosyst.* **146**(4), 814–826 (2012), <http://dx.doi.org/10.1080/11263504.2012.740087>.
19. P. Scholte, A. Al-Okaishi, and A. Saed, "When conservation precedes development: a case study of the opening up of the Socotra archipelago," *Oryx* **45**(3), 401–410 (2011), <http://dx.doi.org/10.1017/S0030605310001535>.
20. K. Van Damme and L. Banfield, "Past, and present human impacts on the biodiversity of Socotra Island (Yemen): implications for future conservation," *Zool. Middle East* (Supplementum 3), 31–88 (2011), <http://dx.doi.org/10.1080/09397140.2011.10648899>.
21. A. G. Miller and M. Morris, *Ethnoflora of the Socotra Archipelago*, Royal Botanical Garden, Edinburgh, UK (2004).
22. P. Scholte and P. De Geest, "The climate of Socotra Island (Yemen): a first-time assessment of the timing of the monsoon wind reversal and its influence on precipitation and vegetation patterns," *J. Arid Environ.* **74**(11), 1507–1515 (2010), <http://dx.doi.org/10.1016/j.jaridenv.2010.05.017>.
23. I. B. Balfour, *The Botany of Sokotra*, Transactions of the Royal Society of Edinburgh, Edinburgh, UK (1888).
24. M. De Sanctis et al., "Classification and distribution patterns of plant communities on Socotra Island, Yemen," *Appl. Veg. Sci.* **16**(1), 148–165 (2013), <http://dx.doi.org/10.1111/avsc.2012.16.issue-1>.
25. A. S. Senan et al., "Determinants of plant species invasions in an arid island: evidence from Socotra Island (Yemen)," *Plant Ecol.* **213**(9), 1381–1392 (2012), <http://dx.doi.org/10.1007/s11258-012-0098-1>.
26. F. Attorre et al., "Will dragonblood survive the next period of climate change? Current and future potential distribution of *Dracaena cinnabari* (Socotra, Yemen)," *Biol. Conservat.* **138**(3), 430–439 (2007), <http://dx.doi.org/10.1016/j.biocon.2007.05.009>.
27. F. Attorre et al., "Developing conservation strategies for endemic tree species when faced with time and data constraints: *Boswellia* spp. on Socotra (Yemen)," *Biodivers. Conserv.* **20**(7), 1483–1499 (2011), <http://dx.doi.org/10.1007/s10531-011-0039-7>.
28. J. U. H. Eitel et al., "Using in-situ measurements to evaluate the new RapidEye satellite series for prediction of wheat nitrogen status," *Int. J. Remote Sens.* **28**(18), 4183–4190 (2007), <http://dx.doi.org/10.1080/01431160701422213>.

29. M. Kruschke, W. Niemeyer, and S. Scherer, "RapidEye: satellite based geo-information system," *Acta Astronautica* **46**(2), 307–312 (2000), [http://dx.doi.org/10.1016/S0094-5765\(99\)00219-2](http://dx.doi.org/10.1016/S0094-5765(99)00219-2).
30. RapidEye AG, "RapidEye standard image products specifications," 2011, rapideye.net/upload/RE_Product_Specifications_ENG.pdf (20 April 2011).
31. G. A. Blackburn, "Quantifying chlorophylls and carotenoids at leaf and canopy scales: an evaluation of some hyperspectral approaches," *Remote Sens. Environ.* **66**(3), 273–285 (1998), [http://dx.doi.org/10.1016/S0034-4257\(98\)00059-5](http://dx.doi.org/10.1016/S0034-4257(98)00059-5).
32. E. Zillmann et al., "Assessment of cereal nitrogen requirements derived by optical on-the-go sensors on heterogeneous soils," *Agron. J.* **98**(3), 682–690 (2006), <http://dx.doi.org/10.2134/agronj2005.0253>.
33. OSGeo, *Grass GIS 6.4 reference manual*, <http://grass.osgeo.org/grass64/manuals/>, OpenSource Geospatial Foundation, Vancouver, CA (28 March 2011).
34. A. C. Bouman, "CLUSTER: an unsupervised algorithm for modelling Gaussian mixtures," (1998), <https://engineering.purdue.edu/~bouman/software/cluster/manual.pdf> (1 October 2011).
35. J. D. McCauley and B. A. Engel, "Comparison of scene segmentations: SMAP, ECHO and maximum likelihood," *IEEE Trans. Geosci. Remote Sens.* **33**(6), 1313–1316 (1995), <http://dx.doi.org/10.1109/36.477185>.
36. J. Besag, "On the statistical analysis of dirty pictures," *J. R. Stat. Soc.* **48**, 259–302 (1986).
37. A. C. Bouman and B. Liu, "Multiple resolution segmentation of textured images," *IEEE Trans. Pattern Anal. Mach. Intell.* **13**(2), 99–113 (1991), <http://dx.doi.org/10.1109/34.67641>.
38. A. C. Bouman and M. Shapiro, "A multiscale random field model for Bayesian image segmentation," *IEEE Trans. Image Process.* **3**(2), 162–177 (1994), <http://dx.doi.org/10.1109/83.277898>.
39. M. Neteler et al., "GRASS GIS: a multi-purpose open source GIS," *Environ. Model. Softw.* **31**, 124–130 (2012), <http://dx.doi.org/10.1016/j.envsoft.2011.11.014>.
40. M. Shapiro and J. Westervelt, "R.MAPCALC: an algebra for GIS and image processing," Technical Report EC-94/13, U.S. Army Corps of Engineers, Construction Engineering Research Laboratories, Champaign, IL (1992).
41. R. G. Congalton, "A review of assessing the accuracy of remotely sensed data," *Remote Sens. Environ.* (1) **37**, 35–46 (1991), [http://dx.doi.org/10.1016/0034-4257\(91\)90048-B](http://dx.doi.org/10.1016/0034-4257(91)90048-B).



Luca Malatesta is a plant ecologist working in the fields of environmental conservation and systemic land use planning. He collaborated with international cooperation projects in Socotra Island (Yemen) for pastoral systems management, (semi-)arid grasslands biodiversity conservation, and thematic cartography. His scientific interests focus on vegetation description, analysis and mapping, conservation of endangered species and ecosystem services and functions, arid and semi-arid ecosystems management in face of livestock grazing and climate change.



Fabio Attorre is a plant ecologist whose activity is mainly focused on international cooperation projects aimed at conservation, sustainable development, and systemic land use planning. His wide experience in this field has been acquired through several projects in Europe (Italy, Albania), Africa (Kenia, Mozambique, South Africa, Niger), South America (Galapagos), Middle-East (Socotra, Yemen), and Asia (India). He works in the fields of conservation of endangered species, climate change, and impact of alien and invasive species on vulnerable habitats.



Alfredo Altobelli is an ecologist working in the fields of ecosystems analysis, geographic information systems, remote sensing, and thematic cartography. His scientific interest focuses on vegetation description and mapping, environmental monitoring and conservation, forest management and land use planning, and analysis of the effects of climate change and human activities on ecosystem services.



Ahmed Adeeb is a botanist at the Environmental Protection Authority (EPA) of Socotra (Yemen). He collaborates with conservation and sustainable development projects in Socotra Island since 2004 and acquired a wide knowledge of Socotran flora. His interest mainly focuses on the description of the vegetation communities of the archipelago and on the collection of seeds for *ex situ* conservation and reintroduction of endangered plant species. He is the manager of the EPA Socotra endemic plants nursery in Hadibo.



Michele De Sanctis is a botanist with a wide knowledge of the vegetation of Mediterranean and Eritrean-Arabian areas. He worked in conservation and development projects in Europe (Italy, Albania) and Middle-East (Socotra, Yemen). His researches are aimed at vegetation description and classification, as well as at monitoring and conservation of endangered plant species and habitats.



Nadim M. Taleb is a plant ecologist at the EPA of Socotra (Yemen). He collaborates with conservation and sustainable development projects in Socotra Island since 2004 and finished his PhD at Sapienza–University of Rome with a thesis on the conservation of endemic *Boswellia* species on Socotra. His interest mainly focuses on the description and analysis of vegetation communities and population dynamics of endangered plant species.



Paul T. Scholte is a plant ecologist with a wide experience in conservation and development programs in both Middle-East (Yemen and Socotra) and Central Africa (Cameroon, Chad, Ruanda). His scientific interest focuses on vegetation dynamics determined by the interaction among rangeland management, climate change, and wildlife and livestock grazing.



Marcello Vitale is an ecologist working in the fields of quantitative ecology and environmental modeling for conservation and sustainable development in the context of international cooperation programs (Mozambique, Socotra, Italy). His scientific works are mainly aimed at the development of predictive models concerning the sustainable use of lands, taking into consideration ecosystem services, subsystems and their inter-relationships, climate and climate change, future social and economic necessities.